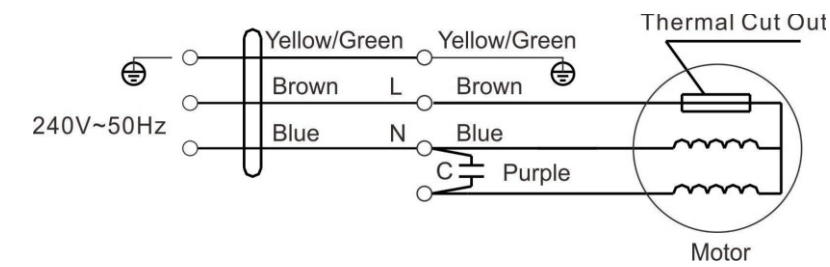


WIRING DIAGRAM



**CONTACT**  
Telephone Equipment (NSW) P/L  
1300 197 220  
Sales@te-telequip.com

**matrix**

VENTILATING FAN  
(Ducted Ventilator)

**FDF100/SLD**  
**FDF150/SLD**

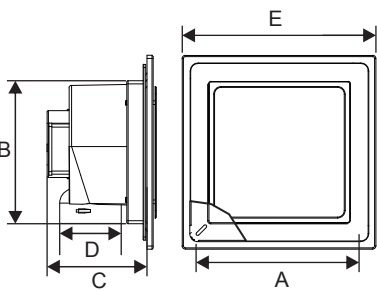
Installation and Maintenance Instructions

THESE INSTRUCTIONS MUST BE READ FULLY  
BEFORE COMMENCING INSTALLATION

SPECIFICATIONS

Model	Size (in/mm)	Volt (V)	Freq (Hz)	Input Power (W)	Air Vol m <sup>3</sup> /min	Pressure Pa	Noise dB(A)
FDF100/SLD	100	240	50	30	2.2	190	47
FDF150/SLD	150	240	50	35	4	110	47

DIMENSIONS (mm)



Model	A	B	C	D	E	Applicable Duct (Ø)	Installation Space (mm)	Applicable Area (m <sup>2</sup> )
FDF100/SLD	260	225	158	100	270	100	232×232	12~16
FDF150/SLD	292	274	176	149	330	150	282×282	25~30

1.0 GENERAL

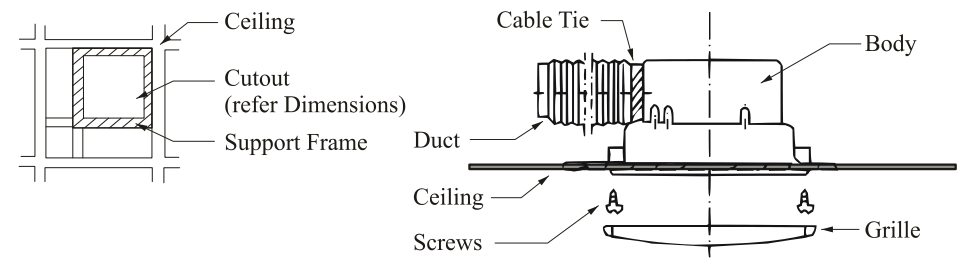
- 1.1 It is important these Installation and Maintenance Instructions are fully adhered to.
- 1.2 The fan should be installed by qualified technician 2.3m above the ground. It should not be installed near a place with flame or vapour.
- 1.3 The fan should not be installed above cooking stoves, flame or hot water vapour.
- 1.4 Green and Yellow colour wire of power supply cord is earthing and it should be grounded properly.
- 1.5 Blue colour wire of power supply cord is neutral and it should be connected with the connector marked with the symbol “N”.
- 1.6 The fan should operate when power supply is connected. If not, please check the thermal fuse, and whether the power supply cord is properly connected and fixed. If it still does not operate, call your qualified technician for further inspection.
- 1.7 Ensure that the fan is switched off from the supply mains before removing the guard.

- 1.8 Precautions must be taken to avoid the back-flow of gases into the room from the open flue of gas or other fuel-burning appliances.
- 1.9 This product is not intended for use by persons (including children) with reduced physical, sensory or mental capabilities, or lack of experience and knowledge, unless they have been given supervision or instruction concerning use of the appliance by a person responsible for their safety. Children should be supervised to ensure that they do not play with the appliance.
- 1.10 To avoid a hazard, a damaged supply cord must be replaced by the manufacturer.
- 1.11 When the ventilating fan is connected with the power circuit an all-polarity switch with at least 3mm contact gap must be in the charging line.
- 1.12 Green and Yellow colour wire of power supply should be earthed.

2.0 INSTALLATION

**WARNING- The fan must be isolated from the power supply during installation and maintenance, and must be earthed in accordance with local regulations**

- 2.1 Upon receipt, the fan should be visually inspected to check for any damage.
- 2.2 Check the details on the rating plate to ensure that the correct power supply (voltage, frequency and phase) is available. An incorrect power supply will lead to permanent damage of the fan.
- 2.3 Means for electrical disconnections must be incorporated in the wiring installation in accordance with the relevant wiring and electrical regulations.



3.0 FAN MAINTENANCE

- 3.1 Do not press on the vane wheel during installation or cleaning.
- 3.2 Periodically inject several drops of sewing machine oil into the oil intake holes in the cover of the motor.
- 3.3 Before cleaning, be sure to disconnect the fan from the power supply. The vane wheel can be cleaned with a soft brush or cloth and the grille can be removed and washed with soap and cotton. (Never use gasoline or other solutions that damage plastics)
- 3.4 For storage, place the fans in a well ventilated environment without opening the packing boxes. Do not store near erosive chemicals.