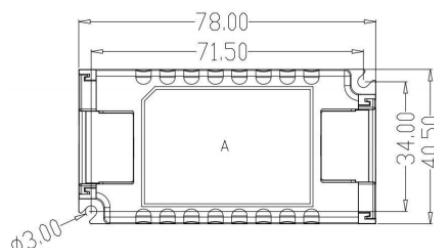


Kreat 20W 0.2-0.55A 45V DALI2 LED Driver



Specifications - CS-MT-KL20C-Pdii

	Mini series	KL12C-PDii	KL20C-PDii	KL35C-PDii
Input	Operating Voltage	198-264Vac 50Hz /60Hz		
	Rated Input Voltage	220-240Vac 50Hz /60Hz		
	DC Input Voltage range	200-240Vdc		
	Input Current	0.08A Max.	0.12 Max.	0.2 Max.
	Input Inrush Current	<15A (Half current pulse width 100µs) @230Vac		
	Power factor(@230V100% load)	≥ 0.90	≥ 0.93	≥ 0.93
	Total harmonic distortion	Typical: 13% (@230Vac, 100% load)		
	Stand-by power	≤0.5W (@230Vac when PUSH or DALI turn off)		
	Efficiency(@230Vac,100% load)	83%	85%	85%
	Wiring Method	0.75-1.5mm ²	0.5-1.0mm ²	0.5-1.0mm ²
Output	Operating mode	Constant Current		
	Load type	LED		
	Ripple requirement (Flickering or llickering-Free)	Flicker value: less than 2% for whole dimming range		
	Start up time	<1s (@230Vac,)		
	No-load output voltage	30V DC Max.	55V DC Max.	55V DC Max.
	Load output voltage range	6-24V DC	9-45V DC	9-40V DC
	Full load output power	12W	20W	35W
	Load output current	350mA(6-24)	200mA(9-45)	700mA(9-40)
		500mA(6-24)	250mA(9-45)	750mA(9-40)
		550mA(6-22)	300mA(9-45)	800mA(9-38)
		700mA(6-17)	350mA(9-45)	850mA(9-36)
			400mA(9-45)	900mA(9-36)
			450mA(9-45)	950mA(9-36)
	Constant current/voltage Precision		500mA(9-40)	1000mA(9-35)
			550mA(9-36)	1050mA(9-33)
	Wiring method	Push terminal, wire cross section:0.5-1.0mm ²		



SHOP SMART. SHOP VALUE

SHOP *differently*



Control Method	Primary PUSH Dimming	Primary PUSH dimming (Max.lead length:20M)		
	DALI Dimming	DALI dimming (Max.lead length:300M)		
Exception Protection Requirements	Output over temperature protection	Yes, without self recovery function(Can be inquired)		
	Output short circuit protection	Yes, without self recovery function(Can be inquired)		
Operating Environment	Operating temperature/ humidity	-25°C~50°C Humidity:85% (Non-condensing)		
	Storage temperature/ humidity	-40°C~80°C, Humidity:10%~95%		
	Max. case temp(Tc)	85°C		
Safety & EMC	EMC standard	EN55015 EN61547 EN61000-3-2 EN61000-3-3		
	DALI protocol standard	IEC62386-102, IEC62386-207 DT6		
	Safety standard	EN61347-1 EN61347-2-13		
	Certification	CE		
	Withstand voltage	3750Vac, 5mA, 60s (Input “L N”- Output “SEC”)		
Others	Degrees of protection	IP20		
	Type of protection	Class II		
	Installation type	Independent installation		
	With crimping	88*52*25.5mm	116*40.5*2mm	136*42.5*24mm
	Without crimping		78*40.5*22mm	96*42.5*24mm
	Blackout memory function	Yes, PUSH blackout memory		
	PUSH dimming synchronization	20 units Max.		
	Packaging requirement	Instruction+clapboard+outer carton(K=A)		
	Weight	105g	159g	209g
	Life	5 year @Ta full load		
Note: All parameters are tested at the input voltage of 230Vac and 25 degree environment unless specified.				

**MOORABBIN**

131-133 Keys Road
Moorabbin VIC 3189

ALTONA

1 Drake Boulevard
Altona VIC 3018

ALBION

35 Sandgate Road
Albion QLD 4010

AUCKLAND

10 Fairfax Avenue, Penrose
Auckland 1061, New Zealand

sales@jh.market

www.jh.market

sales@jhmarket.co.nz

jhmarket.co.nz

AU National: 1300 000 808

Queensland: 1300 000 707

NZ National: 0800 748 848

Wiring Diagram

Fig. A DALI Dimming

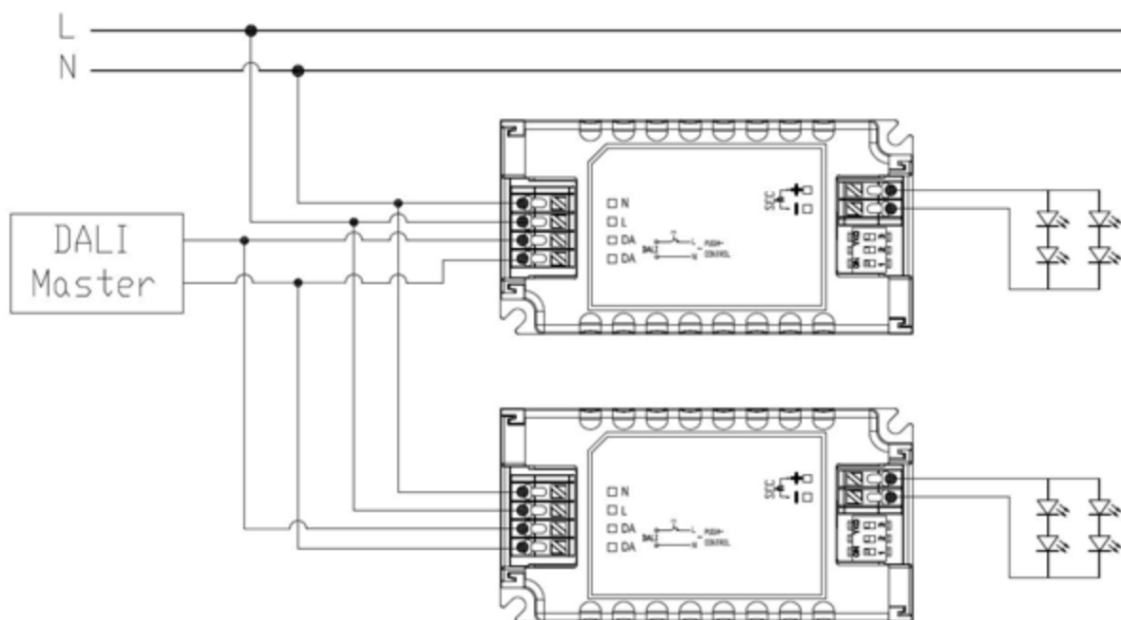
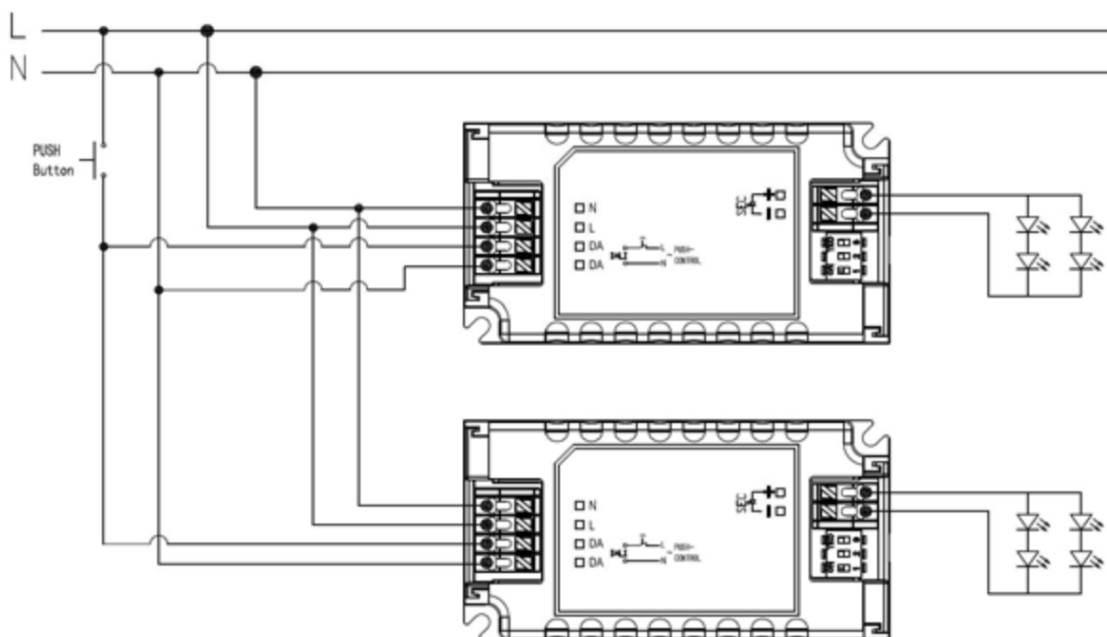


Fig.B Push Dimming





Current Gear Setting

●:ON ○:OFF (SEC1 SEC2)

KL12C-PDii Current gear setting	1	2
350mA(9-40V)	-	-
500mA(9-40V)	ON	-
550mA(9-38V)	-	ON
700mA(9-36V)	ON	ON

KL20C-PDii Current gear setting	1	2	3	KL35C-PDii Current gear setting
200mA(9-45V)	-	-	-	700mA(9-40V)
250mA(9-45V)	ON	-	-	750mA(9-40V)
300mA(9-45V)	-	ON	-	800mA(9-38V)
350mA(9-45V)	ON	ON		850mA(9-36V)
400mA(9-45V)	-	-	ON	900mA(9-36V)
450mA(9-45V)	ON	-	ON	950mA(9-36V)
500mA(9-40V)	-	ON	ON	1000mA(9-35V)
550mA(9-36V)	ON	ON	ON	1050mA(9-33V)

Current Gear Setting

A. Short press the PUSH switch (short press time 0.1S-1S), the LED driver will turn on or off.

B. Dimming: Press and hold the PUSH switch (1S-8S), the LED driver can achieve dimming, brightening or dimming, the dimming range is 2-100%.

C. Memory: PUSH dimming has dimming memory function.

D. Dimming synchronization: The power connected to the same PUSH switch can be synchronized by pressing and holding the PUSH switch for longer than 15S

E. DALI dimming mode: Connect the power supply to the DALI system, and it can be dimmed by the DALI host. The dimming range is 0-100%

1) The LED string must be connected to the load before turning on the input power, otherwise the LED string may be damaged.

2) After the LED drive input is powered off, there will be a residual voltage at the output, which can be maintained for about 3 minutes.



MOORABBIN

131-133 Keys Road
Moorabbin VIC 3189

ALTONA

1 Drake Boulevard
Altona VIC 3018

ALBION

35 Sandgate Road
Albion QLD 4010

AUCKLAND

10 Fairfax Avenue, Penrose
Auckland 1061, New Zealand

sales@jh.market

www.jh.market

sales@jhmarket.co.nz
jhmarket.co.nz

AU National: 1300 000 808

Queensland: 1300 000 707

NZ National: 0800 748 848