

Specification

- 60W/100W/150W/200W/300W available
- Light efficacy up to 140lm/W
- Luminaire lumens up to 42,000lm
- CCT: 5000K (2000K, 3000K, 4000K, 6000K optional)
- CRI: Ra75
- Beam angle: 65°×140°
- IP66 protection rating
- 5 years warranty
- LED lifespan: > 100,000 hours(TM-21 L₇₀)
- Operating temp: -40~+45℃
- Electrical: 100-277Vac,47/63Hz, PF≥0.95
- Suitable for park, garden, courtyard, residential streets, road and other lighting purposes.

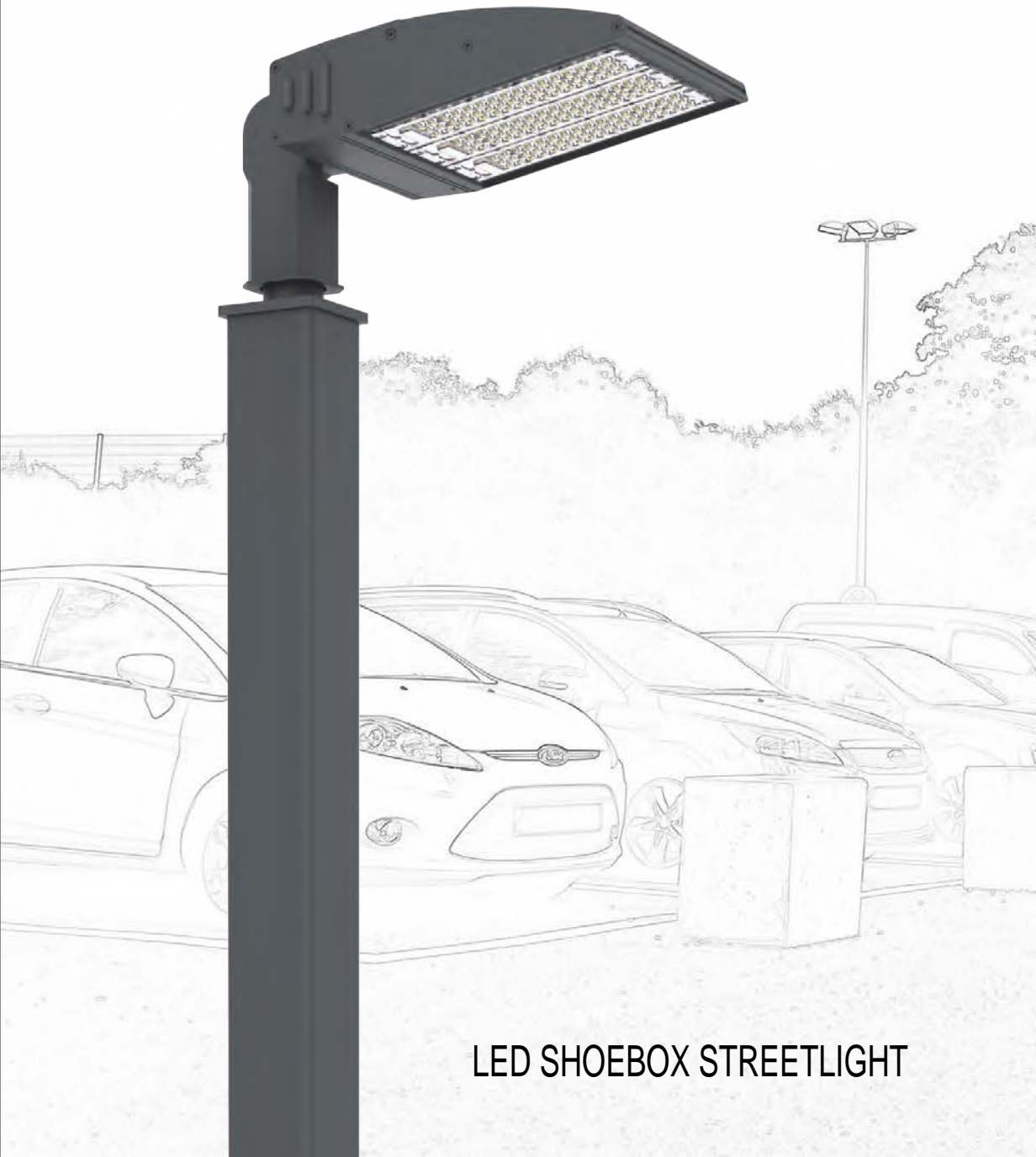
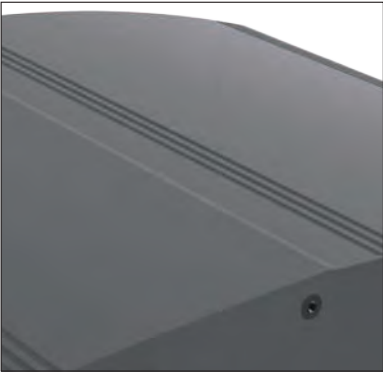
Optional

Multiple mounting accessories

10KV surge protection

Daylight sensor control

140 lm/W	IP66	5 Years	100,000 hours
Light Efficacy	IP Level	Warranty	TM-21(L ₇₀)

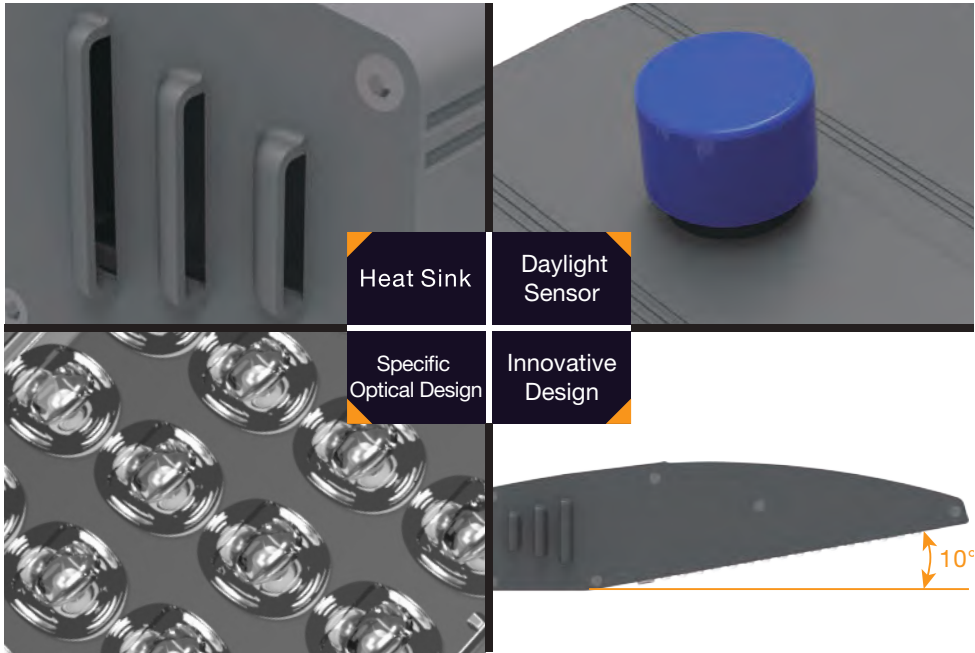


LED SHOEBOX STREETLIGHT

Effectively reduce light pollution & light waste with unique elevation angle.

STRUCTURE & FEATURES

Structure



Heat Sink
Integrated AL 6063 aluminum shell & Louver structure design of heat sink effectively improve heat conduction to ensure LED lifespan.

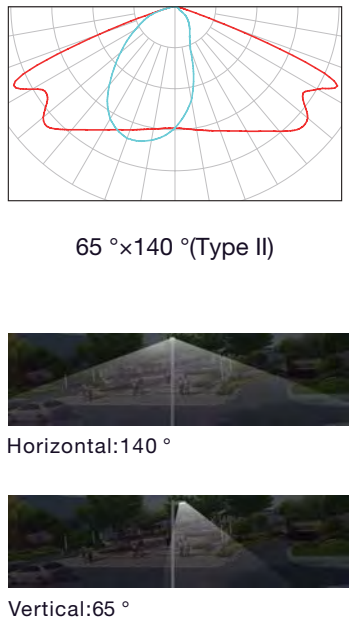
Daylight Sensor
NEMA light sensor compatible, reliable and easy to go.

Specific Optical Design
Excellent cut off asymmetric forward optical design.

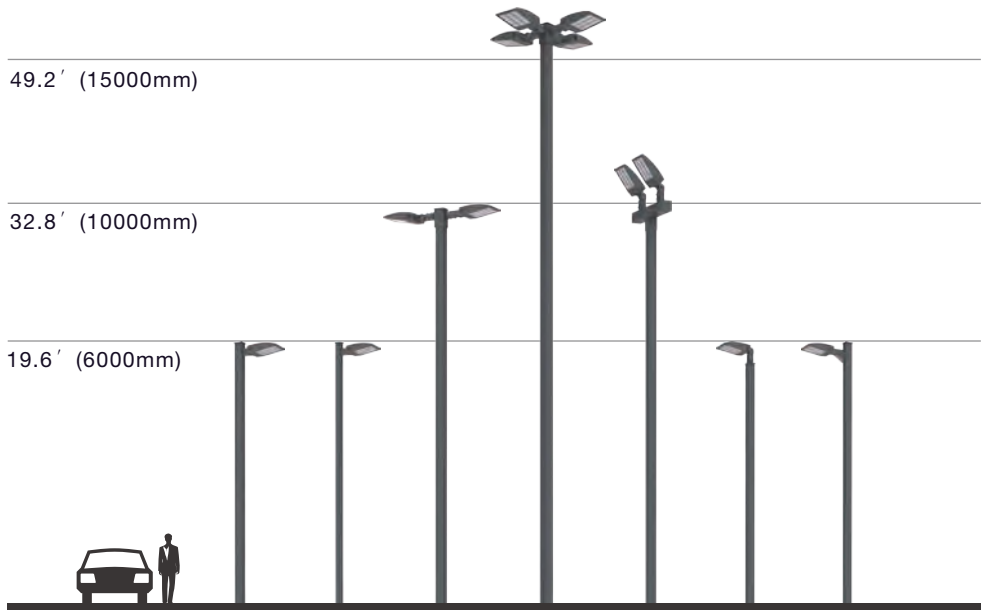
Innovative Design
Greatly reduce light pollution & light wasting with unique elevation angle design, providing high efficiency & stable performance.

OPTICAL & APPLICATIONS

Asymmetric Optic

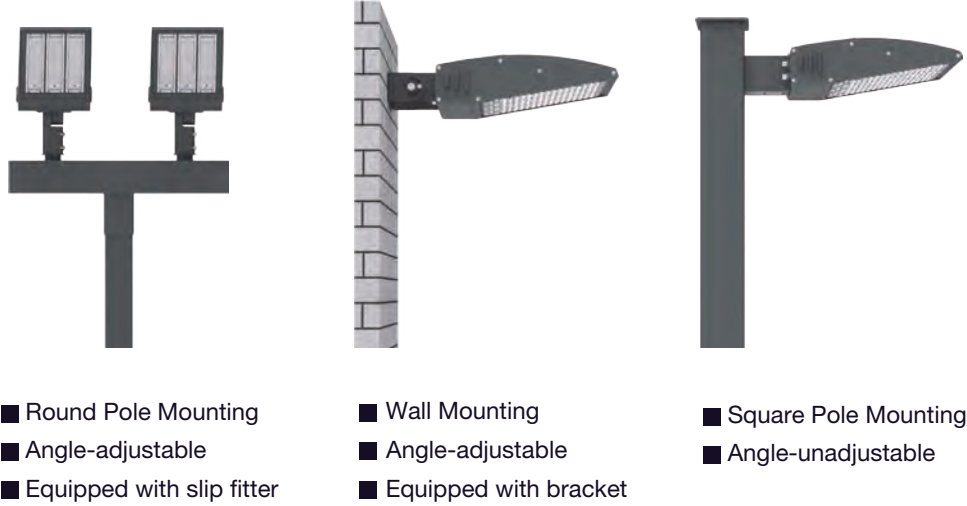


Applications



INSTALLATION & ACCESSORIES

Installation Methods



Accessories

